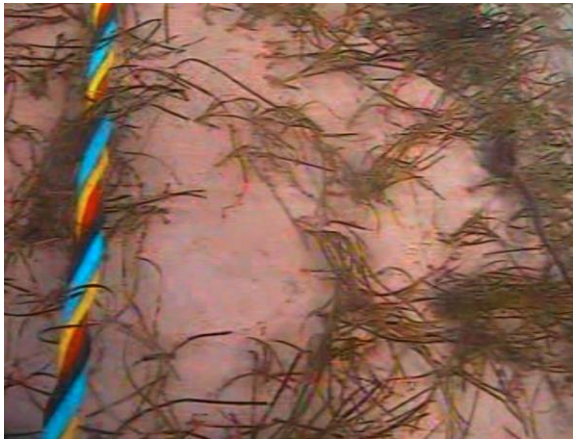


Appendix 18.1 Seabed Survey Images

Landing Jetty transect: 100 m – 0 m offshore



Approximately 100 m offshore - band of seagrass, likely *Zostera marina*



Approximately 90 m offshore - band of seagrass, likely *Zostera marina*



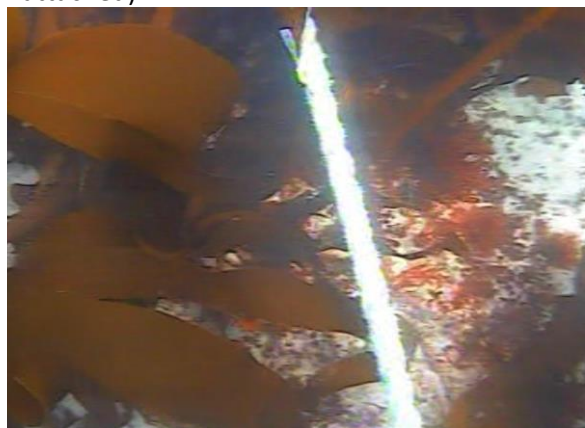
Approximately 80 m offshore - band of seagrass, likely *Zostera marina*



Approximately 70 m offshore – sand (algae not attached)



Approximately 60 m offshore – sand (algae not attached)



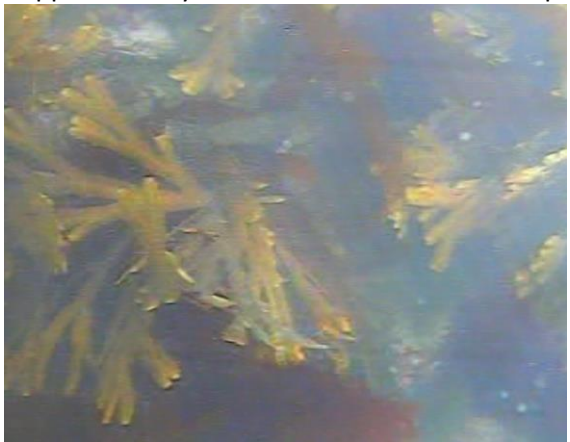
Approximately 50 m offshore –kelps (*Laminaria saccharina* and *Laminaria hyperborea*) and rock



Approximately 40 m offshore – sand and kelps



Approximately 30 m offshore – kelps and rock



Approximately 20 m offshore – fucoids and kelp



Approximately 10 m offshore – sand with patches of greens and filamentous reds

New extended slipway transect: 60 m from end of current slipway – 0 m (end of current slipway)



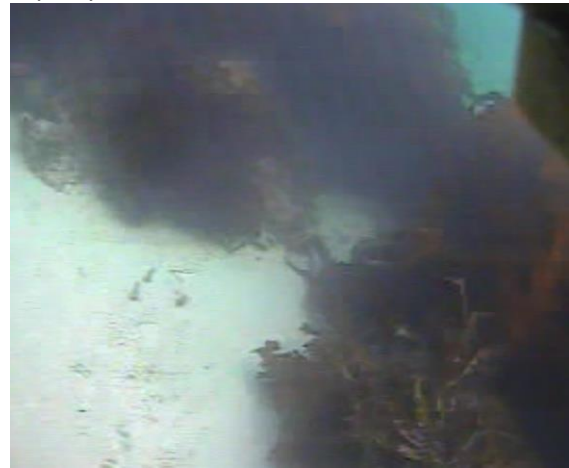
Approximately 60 m from end of current slipway - Seagrass beds



Approximately 50 m from end of current slipway – Sand



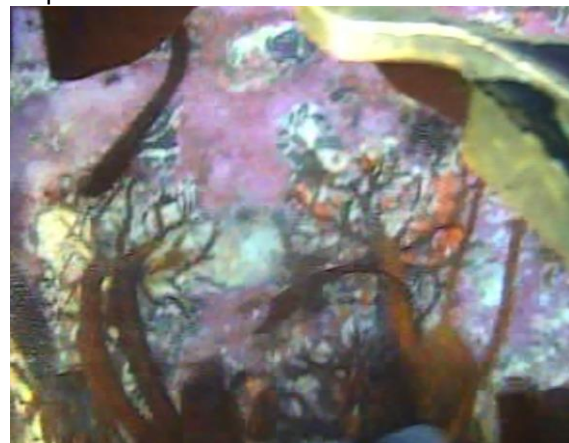
Approximately 40 m from end of current slipway – Sand



Approximately 30 m from end of current slipway – Starting into boulder with fucoids and kelp



Approximately 20 m from end of current slipway – Fucoids and kelp



Approximately 20 m from end of current slipway – Boulders with fucoids, kelp and encrusting red algae



Approximately 10 m from end of current slipway – Boulders with fucoids and green algae



Near end of current slipway – Boulders with fucoids, occasional greens and encrusting red algae